

# MANIFEST

v19

*rites of PASSAGE 2007*



#### Executive Director

Jason Franz

#### Board of Directors

Katherine Dintenfass

Jason Franz

Elizabeth Kauffman

Brigid O'Kane

Andy Schaub

#### Associate Directors

Kristin Cullen

Kevin Muentz

#### Junior Board

Trevor Ponder

Jeffrey Salter

#### Interns

Lynda Camp

Kate Holterhoff

Karina Meza

Amanda Nurre

#### Mission Statement:

Manifest enhances the role of art and design in society by cultivating and focusing the transformative power of creativity in the visual arts. Manifest benefits people in the global and local community, including professionals, students, and the public, by creating quality-centered experiences focused on contemporary visual arts and related activities in the context of creative exploration.

# MANIFEST



vol 19

*MANIFEST is a 501(c)(3) non-profit organization*

**MANIFEST VOLUME NINETEEN**

© 2007 MANIFEST PRESS

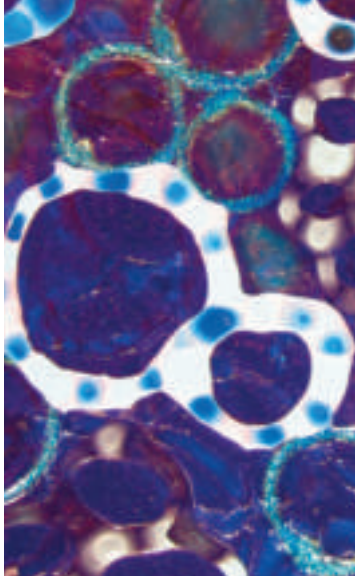
All rights reserved. No part of this publication may be reproduced in any way without written permission from the publisher. All rights in each work of art reproduced herein are retained by the artist.

**Manifest Creative Research Gallery and Drawing Center**  
2727 Woodburn Avenue, P.O. Box 6218, Cincinnati, OH 45206  
(513) 861-3638

First Printing - April 2007, edition of 50  
Designed by Jason Franz  
Printed by PrintPelican.com

Cover details by:  
Jessica Rahn and Nathan Sutton

Support provided by:



A vertical strip on the left side of the page shows a microscopic view of plant cells, likely stained with iodine. The cells are roughly rectangular and arranged in a grid-like pattern. Some cells contain dark, circular structures, possibly starch granules. The colors range from light blue to dark purple.

# MANIFEST


CREATIVE RESEARCH GALLERY  
AND DRAWING CENTER

April 27 - May 25, 2007

*rites of passage 2007*



curated by Jason Franz

The image features a vertical banner. The left side is a plain white background. The right side is a vertical strip with a textured, abstract background. The colors in this strip transition from a deep blue at the top to a purple in the middle, and then to a lighter, yellowish-brown at the bottom. The texture is grainy and pixelated. Centered in the purple section of the banner is the text "RITES of PASSAGE 2007" in a gold, serif font.

*RITES of PASSAGE 2007*

Trey Hoover

Rebecca Nebert

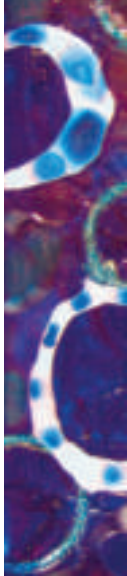
Tim Parsley

Jessica Rahn

Taylor Stephenson

Hana Studer

Nathan Sutton





Conceived and initiated in 2005, The Rites of Passage exhibits were developed in order to support student excellence by offering a public venue for the display of advanced “creative research”; to promote young artists as they transition into their professional careers; and to bring the positive creative energies of regional institutions together in one place.

For this year's Rites exhibit Manifest screened 276 works from senior undergrads in twelve national college programs including the Art Institute of Chicago, Auburn University, Baylor University, Herron School of Art and Design, Miami University of Ohio, Oberlin College, Northern Kentucky University, Thomas More College, University of Buffalo, University of Cincinnati, University of Minnesota, and University of Pittsburgh.

We are delighted that the Rites project now attracts participation by ambitious students from such a wide geographical radius. It is anticipated that this will mark a key change in the future installments of this exhibit series, and will increase its already significant value to the exhibitors, competitors, and the viewing public.

22 works by seven artists from Baylor University, Thomas More College, University of Cincinnati, and University of Buffalo make up this third annual Rites of Passage exhibit.

Jason Franz  
Executive Director

***Admiration of Penguins***

monotype, 10" x 8", 2006

**Trey Hoover**

thomas more college, kentucky

---



**Untitled**  
monotype, 9.5" x 8", 2006



**Choose** (top); **Nourish** (bottom)  
ebony pencil on mylar, 3.5" x 9.5", 2007

**Tim Parsley**  
university of cincinnati, ohio

---





**Clean** (top); **Press** (bottom)  
ebony pencil on mylar, 3.5" x 9.5", 2007, 2006

**Embrace**

acrylic on wood, 80" x 36", 2006

**Rebecca Nebert**

university of cincinnati, ohio

---



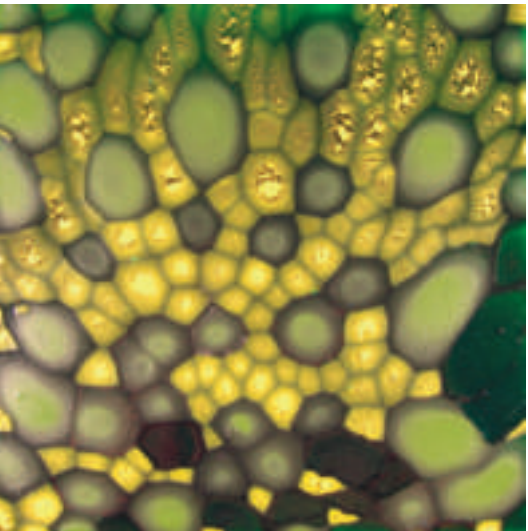
**Jessica Rahm**

University of Cincinnati, Ohio

---

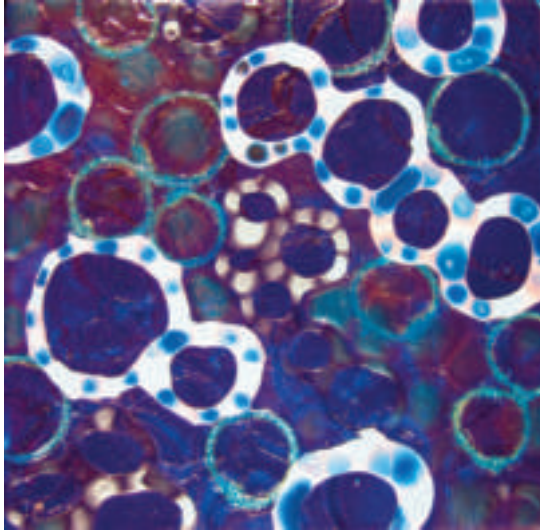
***Chlorophyll***

enamel, acrylic, and glass paint on canvas  
8" x 8", 2007

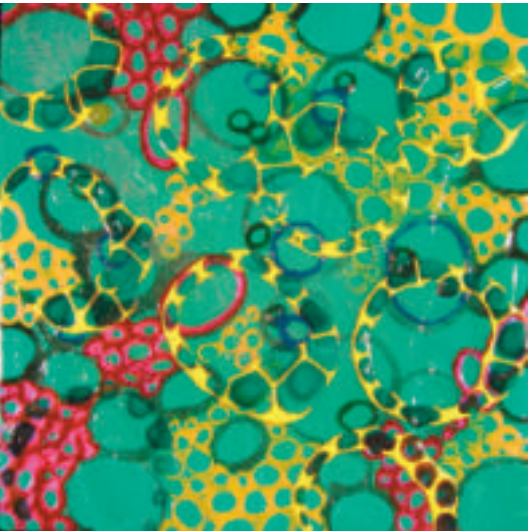


**Blue**

emamel, acrylic, and glass paint on canvas  
8" x 8", 2007





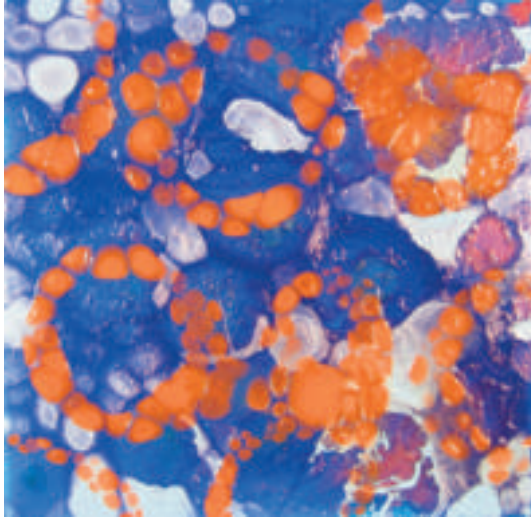


***After Image***

enamel, acrylic, and glass paint on canvas  
12" x 12", 2007

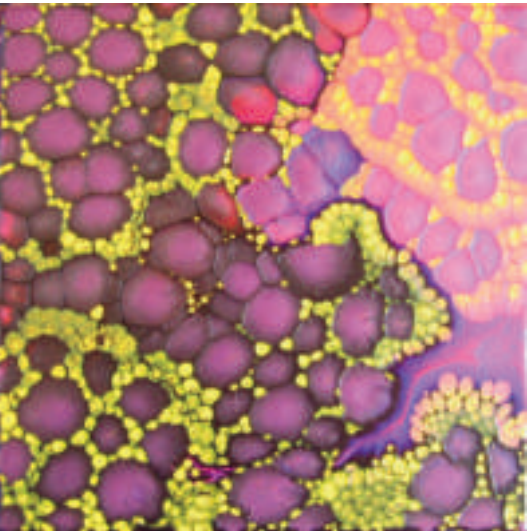
**Orange**

enamel, acrylic, and glass paint on canvas  
8" x 8", 2007



***Pomegranate***

enamel, acrylic, and glass paint on canvas  
8" x 8", 2007



**Emma**

oil on canvas, 48" x 24", 2006

**Taylor Stephenson**

thomas more college, kentucky

---



***Mask with Figure***  
oil on canvas, 48" x 24", 2007



**Melissa**

oil on canvas, 48" x 24", 2007



**Nathan Sutton**

university of buffalo, new york

---

***Analogs 2***

oil on aluminum screen

9.5" x 12", 2006



***Analogs 1***

oil on aluminum screen  
9.5" x 9.5", 2006





***Ascent to Our Destination***

oil on aluminum screen

27.5" x 76", 2006



**Also *Towards Boulder***

oil on aluminum screen

12" x 34", 2006



**Analog 5**  
oil on aluminum screen  
9.5" x 12", 2006



**Number 1**

mixed media on paper, 51" x 60", 2006

**Hana Studer**

baylor university, texas

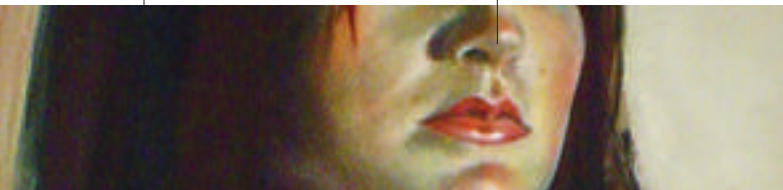
---





**Number 2**  
mixed media on paper, 50" x 54", 2006







## **MANIFEST**

CREATIVE RESEARCH GALLERY AND DRAWING CENTER

2727 woodburn avenue cincinnati, ohio 45206  
513 861 3638  
[www.manifestgallery.org](http://www.manifestgallery.org)